



Project Name: \_\_\_\_\_

Location: \_\_\_\_\_

Item #: \_\_\_\_\_ Qty: \_\_\_\_\_

Model: \_\_\_\_\_

# NARROW DEPTH BACK BAR MERCHANDISERS

MODEL:  BBB-4824G  BBB-4824  BBB-6024G  BBB-6024  
 BBB-7224G  BBB-7224



BBB-4824G



BBB-4824



BBB-6024G



BBB-6024



BBB-7224G



BBB-7224

Berg's Narrow Depth Back Bar Coolers are a great way to merchandise and store beer, soda and other beverages in your bar or restaurant. Constructed with an all stainless steel countertop, interior floor and walls and features LED lighting and adjustable shelves. The 24" narrow depth is ideal for establishments with a smaller work area. These units are available in both glass and solid swing door models. These models are ETL Listed, ETL Sanitation and backed by a 2 year warranty on parts and labor and a 5 year warranty on the compressor.

## FEATURES AND CONSTRUCTION

- 304 stainless steel top, interior walls and floor
- Durable black steel exterior
- Environmentally-friendly R290 refrigerant
- Side mounted compressor
- Foamed-in-place polyurethane high density cell insulation throughout the entire cabinet
- Plastic coated wire shelves
- Automatic defrosting
- 24" narrow depth is great for areas with limited bar space

## NOMINAL STORAGE CAPACITY

BBB-4824G.....	11.8 Cu Ft (334 L)
BBB-4824.....	11.8 Cu Ft (334 L)
BBB-6024G.....	15.8 Cu Ft (447 L)
BBB-6024.....	15.8 Cu Ft (447 L)
BBB-7224G.....	19.6 Cu Ft (555 L)
BBB-7224.....	19.6 Cu Ft (555 L)

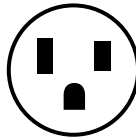
## TEMPERATURE

Holding Temperature..... 33°F to 41°F (1°C to 5°C)

- These models are designed to operate in an environment where temperature and humidity do not exceed 75°F (24°C) and 55% relative humidity

## ELECTRIC

115V / 60Hz / 1Ph  
 7' (2.1m) NEMA 5-15P cord set included



NEMA 5-15P

## 3RD PARTY APPROVALS



Intertek



Intertek

## BERG WARRANTY

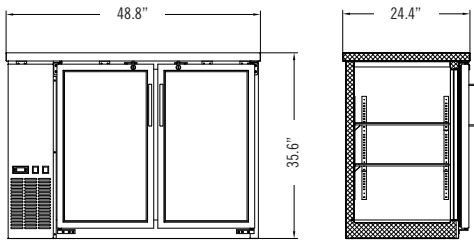
Berg back bar merchandisers are warrantied for 2 years on parts & labor, 5 year warranty on the compressor.

For warranty service on these products please call National Service America (NSA) at 1-877-672-7740.

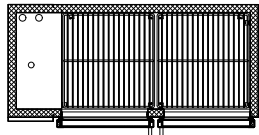
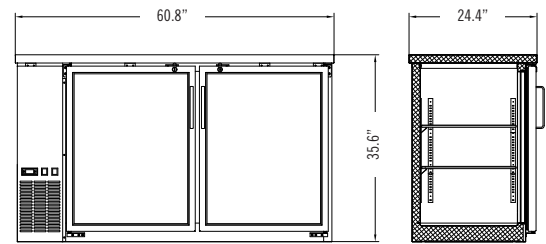


# NARROW DEPTH BACK BAR MERCHANDISERS

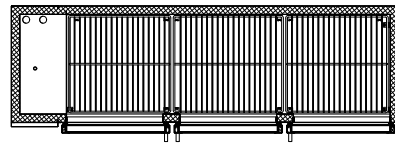
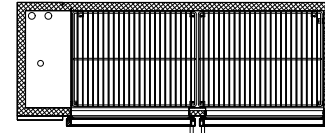
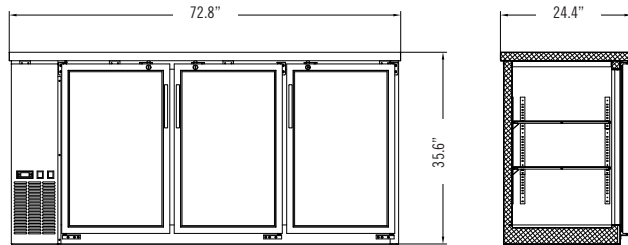
**BBB-4824**



**BBB-6024**



**BBB-7224**



Model Number	BBB-4824G	BBB-4824	BBB-6024G	BBB-6024	BBB-7224G	BBB-7224
Type	Glass Door	Solid Door	Glass Door	Solid Door	Glass Door	Solid Door
Doors	2	2	2	2	3	3
Shelves	4	4	4	4	6	6
Net Volume (Cu. Ft.)	11.8 Cu. ft.	11.8 Cu. ft.	15.8 Cu. ft.	15.8 Cu. ft.	19.6 Cu. ft.	19.6 Cu. ft.
Overall Dimensions (in)	48.8" × 24.4" × 35.6"	48.8" × 24.4" × 35.6"	60.8" × 24.4" × 35.6"	60.8" × 24.4" × 35.6"	72.8" × 24.4" × 35.6"	72.8" × 24.4" × 35.6"
Interior Dimensions (in)	36.2" × 18.5" × 30.5"	36.2" × 18.5" × 30.5"	48.2" × 18.5" × 30.5"	48.2" × 18.5" × 30.5"	60.2" × 18.5" × 30.5"	60.2" × 18.5" × 30.5"
Refrigerant	R290	R290	R290	R290	R290	R290
Horsepower	3/7	3/7	3/7	3/7	3/7	3/7
Voltage/Hertz/Phase	115/60/1	115/60/1	115/60/1	115/60/1	115/60/1	115/60/1
Amps	3.5	3.5	3.5	3.5	3.5	3.5
Net Weight (lbs)	232 lbs	232 lbs	276 lbs	276 lbs	331 lbs	331 lbs
Gross Weight (lbs)	282 lbs	282 lbs	320 lbs	320 lbs	375 lbs	375 lbs
Shipping Dimensions (in) W × D × H	51.2" × 27.6" × 42.1"	51.2" × 27.6" × 42.1"	63.4" × 27.6" × 42.1"	63.4" × 27.6" × 42.1"	75.2" × 27.6" × 42.1"	75.2" × 27.6" × 42.1"
Capacity	2 Kegs (Half Barrels)	2 Kegs (Half Barrels)	2 Kegs (Half Barrels)	2 Kegs (Half Barrels)	3 Kegs (Half Barrels)	3 Kegs (Half Barrels)
	48 6-pks (12 oz. cans)	48 6-pks (12 oz. cans)	72 6-pks (12 oz. cans)	72 6-pks (12 oz. cans)	76 6-pks (12 oz. cans)	76 6-pks (12 oz. cans)

02/15/23

Due to periodic changes in designs, methods, procedures, policies and regulations, the specifications contained in this document are subject to change without notice. While we exercise good faith efforts to provide information that is accurate, we are not responsible for errors or omissions in information provided or conclusions reached as a result of using the specifications. By using the information provided, the user assumes all risks in connection with such use.